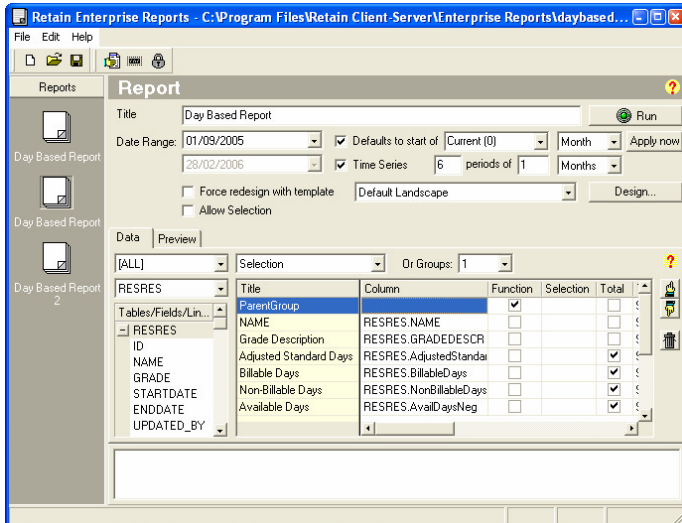


Retain Resource Planning System

Enterprise Reports

Retain Enterprise Reports is an integrated tool that allows the creation of powerful time series and graphical reports, harnessing the data captured in Retain Resource Planning System, Retain Time and Retain Skills. This will allow you to analyze all scheduling aspects of your business, pinpointing the exact information you need to increase your productivity and make effective business decisions.



Enterprise Reports is a multi-functional tool that can generate report types such as:

- ◆ Utilisation and availability
- ◆ Time and cost
- ◆ Revenue forecasting
- ◆ Exception reporting
- ◆ Executive / Management reports
- ◆ Time series reporting
- ◆ Planned Time vs Actual Time reports
- ◆ Multi-database consolidation

Enterprise Reports is designed for the central resource administrators and managers who require vital management information, where templates can be created for users to run reports, or individuals can create desired reports when needed.

Features - Reporting

- ◆ Produce analytical reports by querying your schedules using calculated fields.
- ◆ Customise calculated fields to output results specific to your needs.
- ◆ Organise the data in a report using date ranges and sort filters.
- ◆ Produce time series reports for comparative analysis.
- ◆ Create reports to be consistent over your entire organization using templates, or create customized versions of reports for specific individuals or groups.
- ◆ Modify the appearance of reports for a more effectual presentation.
- ◆ Generate graphical charts and diagrams.
- ◆ Export as CSV format or print to various formats.

Report Samples

